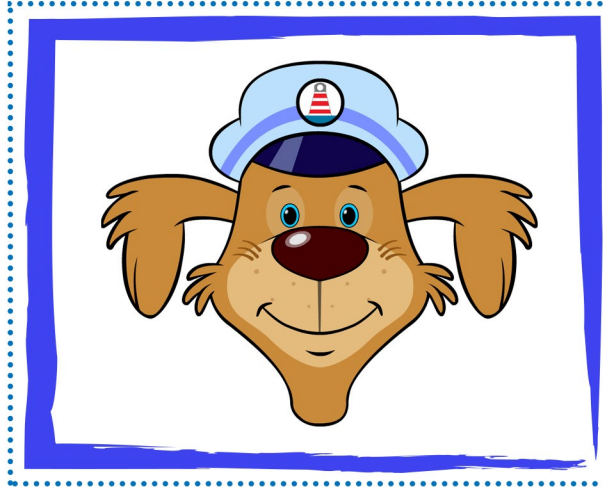
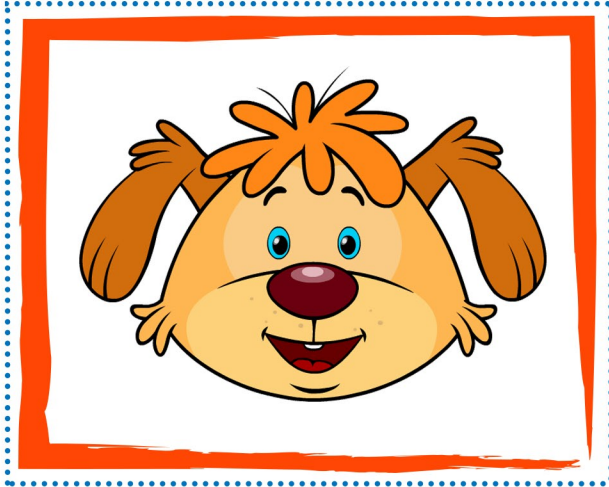


Can you help **Alba** find the matching pairs!

Turn over two cards at a time to see if they match. If two match they can be kept. Keep going until all the pairs have been found!

Memory Game

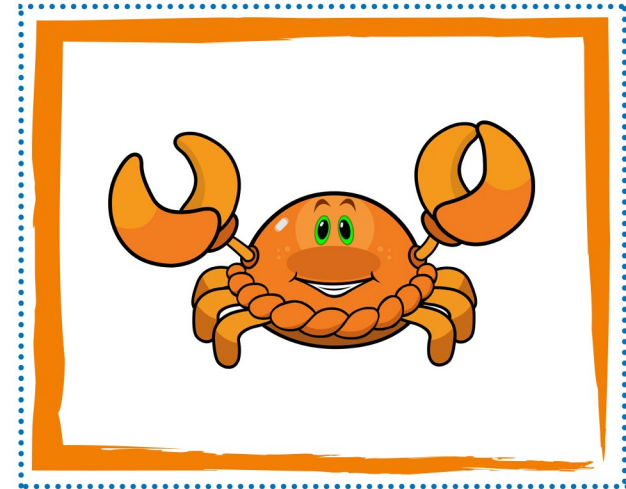
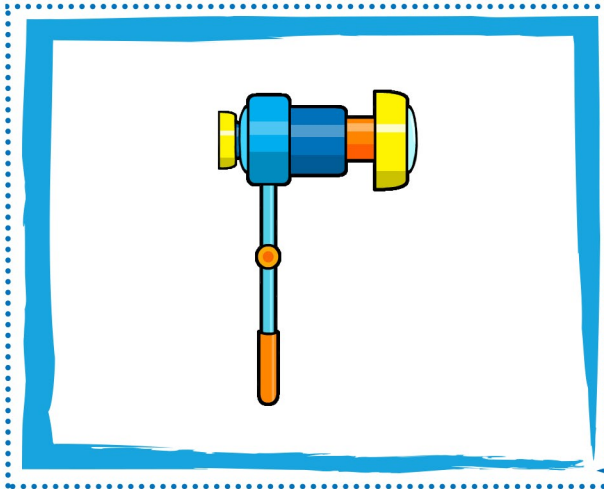
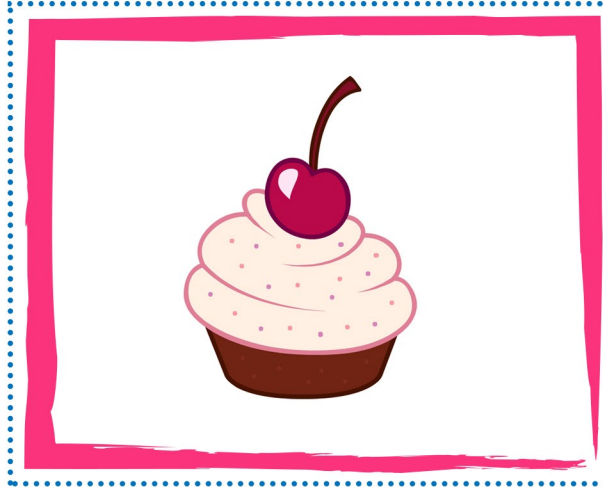
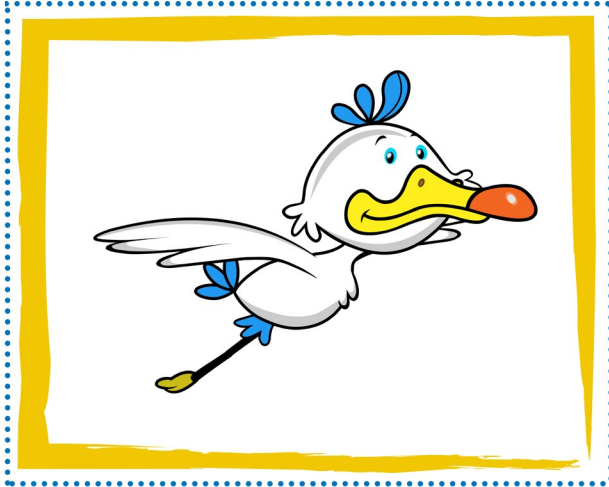


Print these cards **twice** - cut them out along the dotted lines - mix them up (images facing down) - start matching!

Can you help **Alba** find the matching pairs!

Turn over two cards at a time to see if they match. If two match they can be kept. Keep going until all the pairs have been found!

Memory Game



Print these cards **twice** - cut them out along the dotted lines - mix them up (images facing down) - start matching!